

VETERINARY SHOCK WAVE THERAPEUTIC APPARATUS

MODEL NO.: EasyShock 2.0



AMERICA CRYO LLC

51575 Avenida Navarro

La Quinta, CA 92253

Tel: +1 3106207921 | Email: contact@lamericacryo.com

www.AmericaCryo.com

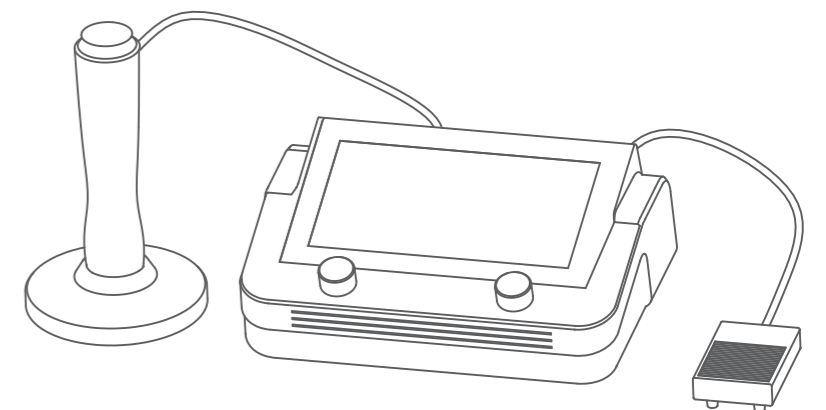
OPERATION MANUAL

Before operating this unit, please read this manual completely.



CONTENTS

· Safety instructions and precautions	03
· Attention and Warning	
· Electrical and mechanical safety	
· Product introduction	04
· Product description	
· Performance parameters	
· Working and storage environment	
· Space requirements	
· Instructions	06
· Power up	
· Enter password	
· Choose treatment mode	
· Starting treatment	
· Ending treatment	
· Maintenance and troubleshooting	09
· Clean the equipment	
· Simple fault handling	
· Guidelines for Clinical Application	10
· Contraindications	
· Adverse event	
Appendix 1:Equipment list	11



⚠ Safety instructions and precautions.

This chapter introduces the safety precautions in detail.

• Attention and Warning

Here are the warnings and cautions in the instructions.

Warning:

- In order to protect the personal safety of the user and the healer, please follow the instructions.
- The equipment contains sophisticated electronic components that may cause serious damage if dropped, hit or collided. When not in use, it should be properly maintained. We are not responsible for any damage to the equipment caused by falling, misuse, misuse or negligence.

- Do not immerse the device in any liquid or it will cause damage.
- Except our technical personnel, others are not allowed to overhaul the internal parts of the machine, including internal adjustment of power supply, cooling system, handle, etc, pay attention to the dangerous high pressure in the unit.

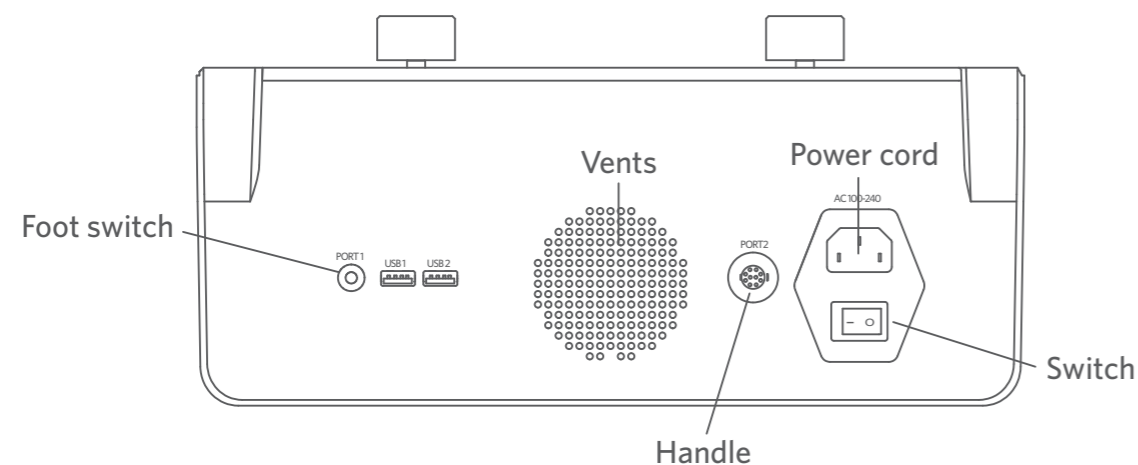
Attention:

- Do not treat areas of the head, chest, abdominal cavity, major nerves and vessels (such as the spine) that may cause adverse reactions.
- If previously treated areas have unrecovered redness, pain, swelling, bruising, or other side effects, do not redo the treatment in the near future.

Electrical and mechanical safety

Operators should pay attention to electrical and mechanical safety when using. Please follow the following instructions when using:

- Before starting the device, please check whether the power cord, foot switch and handle on the back panel of the host machine are well connected to the port and the power plug is well connected. The power is in the ac100-240 range and the power switch is located at "O".



- Before starting the equipment, please check the position of the heat sink hole on the back panel of the host machine without object shielding to ensure good ventilation.
- The foot switch is used by the customer's foot. If the customer has any discomfort during the treatment, the foot switch and handle can be pressed down to stop working.
- Unplug the unit from the wall outlet after use, before cleaning and maintenance.
- Keep all panels and cover plates closed, and do not remove any of the equipment by any person other than our designated technician parts.
- Disconnect the power when the machine is moving, put the handle in a safe position, handle it lightly, and the display screen cannot be stressed.

• Product introduction

This chapter is a general description of the shock wave therapeutic apparatus

• Product description:

The shock wave therapy apparatus uses the electromagnetic wave effect to produce a mechanical shock wave that can penetrate into human tissues, focusing on the diseased part of the body and passing through. The over focused shock wave acts on the painful part of the body to stimulate healing, tissue regeneration, and repair, thus achieving therapeutic goals.

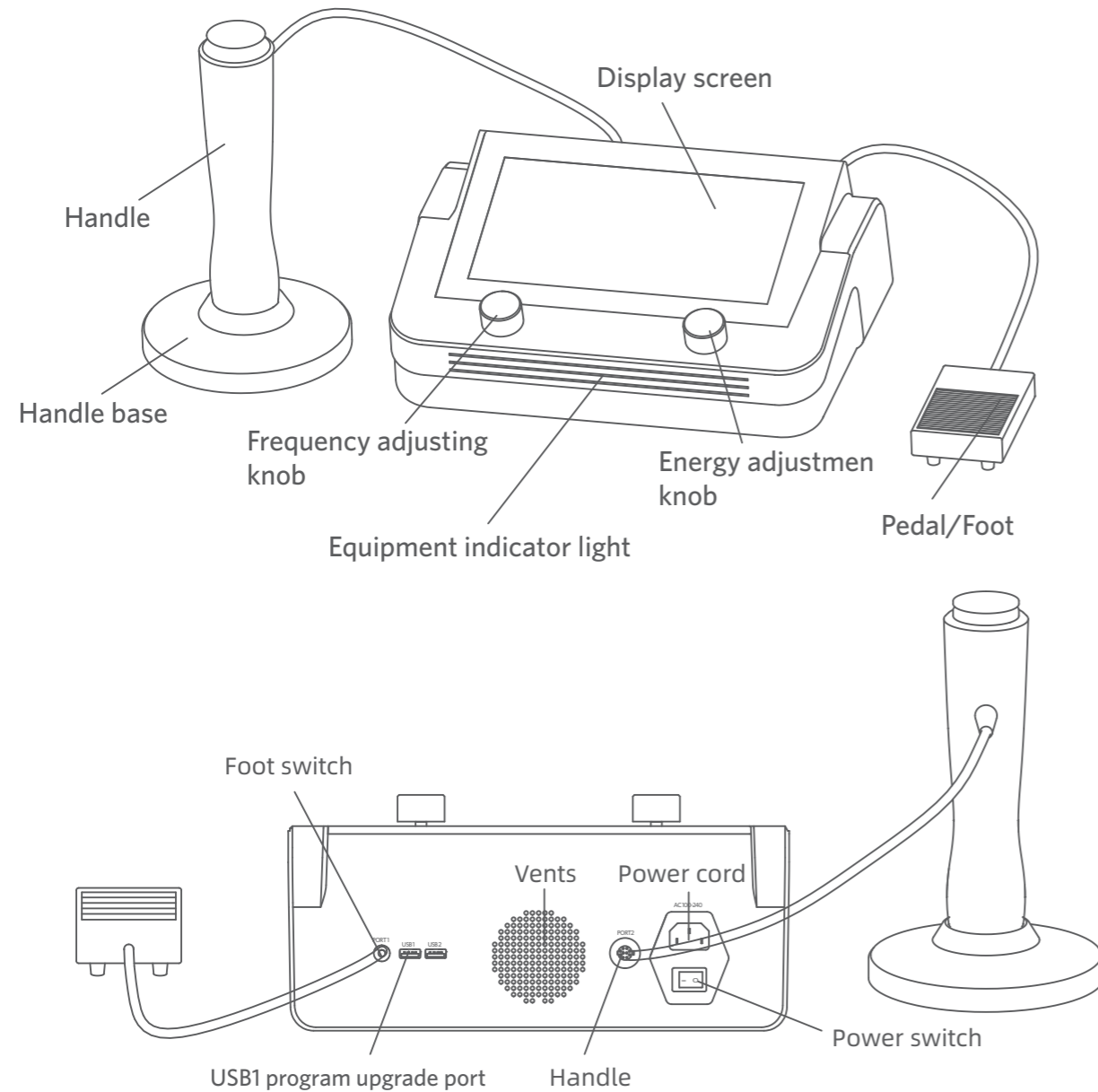
Intended use:

Shock wave therapy apparatus are used by professional operators, such as doctors, nurses and trained clinicians. Although the operation of the device is not Minimum age is required, but operators should comply with laws and regulations restricting the use of equipment. Before use, the operator should complete the equipment The training program. The operation of the equipment is independent of previous experience. The device can be used for mild reading impaired vision, corrected vision, and light vision Degree of hearing impairment or hearing correction is used by operators, however, operators need to be able to use both arms and hands to operate the system.

Indications

Shock wave therapy apparatus is suitable for non-invasive treatment of bone tissue diseases (delayed fracture healing and nonunion, early adult femoral head failure Death), and soft tissue chronic injury diseases (periarthritis of shoulder, vertebra disease, Achilles tendinitis, plantar fasci-itis, tennis elbow, low back pain, etc.)

• **Product Structure:**



• **Performance parameters:**

Table of performance parameters of shock wave therapeutic apparatus

Item	Parameter
Product name	Shock wave therapy apparatus
Product Model	EasyShock 2.0
Shock wave mode	Electromagnetic type

Switching mode	Foot switch
Energy	60-210mJ
Frequency	1-16Hz
Working Mode	Continuous/every 4 cycles/every 8 cycles/ every 12 cycles
Handle cooling mode	Air cooling
Power source	100~240VAC 50/60Hz
Input power	350W
Size	320(W)mmX133(H)mmX244(L)mm
Weight	3KG

• **Working and storage environment:**

- A. Operating environment temp.: 5℃~30℃;Storage environment temp.:5℃~50℃
- B. Relative humidity:30%~80%
- C. Air pressure:86KPa~106KPa
- D. Power supply voltage:AC100-240V 50/60Hz

Note: Exceeding the normal temperature range will shorten the service life of the device.

Space requirements:

The EasyShock 2.0 measures 25 cm long, 32 cm wide and 14 cm high. The machine should be away from the hot air inlet and protected with other objects. Hold a distance of more than 60cm, ensuring that enough air space is left to maintain a comfortable room temperature and heat dissipation requirements.

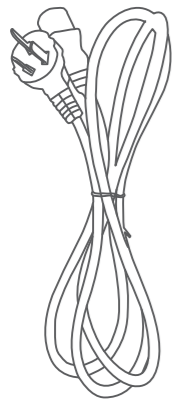
• **Instructions**

This chapter is the operation procedure of shock wave therapeutic apparatus.

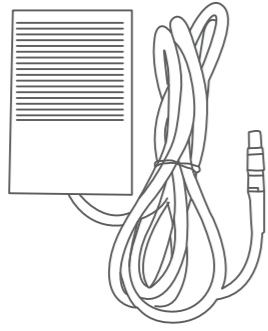
• **Power up**

Step 1: Insert the power cord in Figure 3.1 into the AC100-240VC power input port on the rear panel of the host.

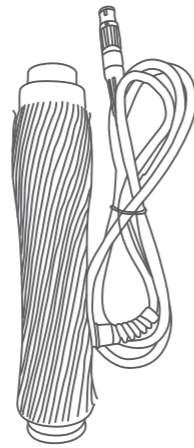
Step 2: insert the foot switch connector in figure 3.2 to the PORT1 foot switch connector on the rear panel of the main engine, and press the red dot in figure 3.4 up, insert figure 3.3 Handle connector into PORT2 handle connector port in the same way.



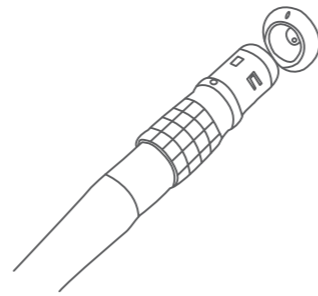
3.1 Power Cord Figure



3.2 Pedal switch



3.3 Handle Figure



3.4 Port connection diagram

Step 3: Insert the power plug in Figure 3.1 into ac100-240V wall power, and then press the power switch on the back panel of the host to open the system. As shown in the figure, the device enters the power-on animation interface.

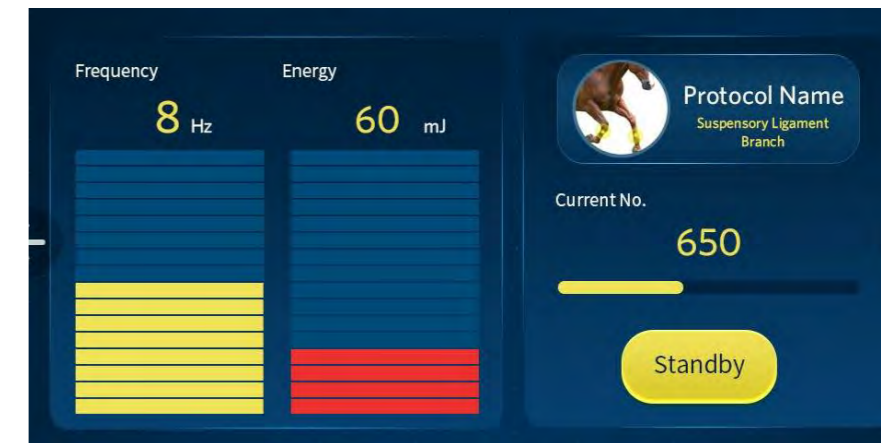


3.5 Boot animation

Choose

treatment

Click on the desired treatment on the main interface, and a pop-up window will appear on the interface. After that, a preselected protocol will appear, to modify it : rotate the frequency and energy adjustment knob of the front panel of the host to set the frequency (Left) and energy (right). Clockwise rotation increases, counterclockwise rotation decreases, Click on the number of shocks to modify the desired number.



3.7 Main interface

• **Setting of treatment parameters**

The adjustable range of frequency and energy is as follows:

When frequency is set at 1 ~ 8Hz, the energy can be set at 60 ~ 210MJ;

When frequency setting is 9 ~ 15 Hz, the energy can be set to 60 ~ 190- (frequency-9) x10 MJ; When the frequency is set at 16Hz, the energy can be set at 60 ~ 130 MJ.

*Note: when the handle is running and the treatment head is firing the shock wave, the parameters cannot be adjusted. It is necessary to release the foot switch to suspend the firing adjust parameters.

Starting treatment

Remove the handle from the base of the handle, press the end of the treatment head on the pain point, click Start on the screen then step on the foot switch, and the treatment head starts to emit shock wave. The handle begins to move slowly in circles, covering all areas of pain, gradually increasing in strength and straightening as far as the patient can handle it until the patient can feel the pain.

Note: In clinical practice, the physician sets the parameters according to the actual situation of the patient. Shock wave therapy is different for each patient. The frequency of treatment depends on how sensitive the patient is to pain, and the pain point depends on the patient's description.

Ending treatment

When the patient feels unbearable pain, the parameters can be turned down, or the treatment can be stopped at the doctor's recommendation and the operator can relax turn on foot switch. As shown in FIG. 3.7 on the main interface, when the current number of rounds reaches the pre-selected value, the first treatment is finished and the handle stops run.

• **Maintenance and troubleshooting**

This chapter is about the daily maintenance of the shock wave therapeutic apparatus performed by the operator. The operator can only perform the dimensions listed in this chapter. Maintenance measures, any other maintenance work can only be operated by our authorized technicians.

Clean the equipment

Clean the outer surface of the machine at least once a week with a soft wet cotton ball. A neutral cleaner can be used, but be careful not to leave liquids. Do not use acid or alkaline cleaner when it penetrates into the equipment.

After each use, wipe the surface of the treatment head with a soft tissue to keep it clean and free of oil, and then use 70% ~ 75% of the medicine alcohol disinfection treatment.

Simple fault handling

phenomenon	probable cause	measures
No display	The power cord is not properly connected	Check whether the power cord and plug are properly connected
	The power switch is not pressed	Press the power switch on the back panel of the main engine to "I"
	The fuse blew	Turn on the fuse box above the power switch and replace the fuse
When you click an icon on the display screen, the system doesn't respond	/	Please contact our maintenance department
The system cannot enter the main interface	/	Please contact our maintenance department

• **Guidelines for Clinical Application**

Contraindications:

As with any other treatment, it is the physician's responsibility to determine whether EasyShock 2.0 is an appropriate treatment option for his or her clients. The use of shock wave therapy equipment is contraindicated for:

Cancer patients

- Diabetics
- Pregnancy or lactation
- Thrombotic patients(Or patients with thrombotic tendency)
- Patients with anticoagulant dysfunction(or patients with anticoagulants)
- The site through which the head, chest, abdominal cavity, great nerves, and great vessels pass (spine)

Adverse event:

Transient side effects may occur during treatment, including:

- Turn red · Dull pain
- Swelling · Bruises

* Note: At the end of treatment, the client may experience the side effects listed above. These symptoms should go away gradually, the dull pain usually goes away within two weeks, but some customers may stay longer.

• Appendix 1:Equipment list

Item	Material name	Quantity
1	host machine	1
2	handle	4
3	handle base	1
4	power cord	1
5	foot switch	1
6	treatment head accessories	6